

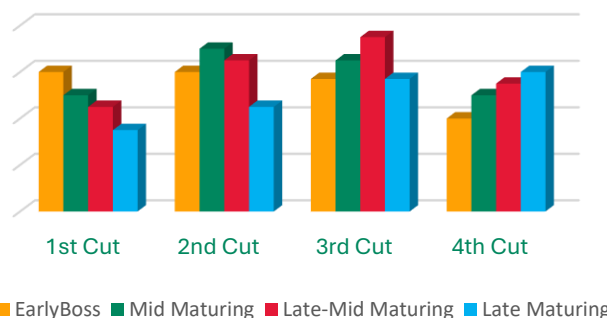
QUALITY FORAGE. EARLIER.

*“**EarlyBoss** tetraploid annual ryegrass provides exceptional value to producers in regions with mild winters and short growing seasons, where high nutritional quality and early forage availability are essential for livestock performance and operational efficiency.”*

More Valuable Forage in the First Cut

By including **EarlyBoss** in your forage program, you can increase your opportunity to harvest more premium quality forage earlier. Preliminary data from Auburn University’s extensive annual ryegrass forage variety database indicates that **EarlyBoss** has the potential to deliver 9-19% more Relative Forage Value (RFV) in the first hay cut or grazing event. In comparison, mid-late maturing varieties, such as Big Boss and Attain will typically deliver higher RFV through the second half of the growing season. RFV combines TDN, CP and yield to determine relative forage value of each harvest when comparing multiple varieties.

EarlyBoss Forage Comparison



When Beginning and Finishing Early Matters

MATURITY University of Florida Gainesville | 2019-20

Variety	Maturity
Rapido	March 7
FrostProof	March 22
EarlyBoss	March 26
Attain	April 7
Big Boss	April 7
Trinova	April 8
Marshall	April 9
Nelson	April 9
Jumbo	April 9

EarlyBoss initiates and concludes vegetative growth earlier, offering similar high-quality forage on a slightly advanced timeline. This is especially valuable when transitioning to warm-season pastures or needing good termination in preparation for spring plantings. Depending on location and planting date, **EarlyBoss** matures 4-12 days before medium-late maturing varieties such as Big Boss and Attain.

Fight the Blast and Rust

EarlyBoss was born ready to combat the known disease pressures of the Deep South. Using extensive cycling and parentages, **EarlyBoss** has improved resistance against *Pyricularia oryzae*, commonly called blast/gray leaf spot, as well as resistance to crown rust *Puccinia coronata*.

GRAY LEAF SPOT University of Florida Gainesville | 2019-20

Variety	Mar 30	Apr 13
EarlyBoss	1.7*	3.3*
FrostProof	2.0*	4.0*
Attain	4.0	6.7
Marshall	4.0	6.0
Big Boss	4.7	8.0
Jumbo	5.0	7.3
Gulf	7.7	9.7
Isd	1.7	1.6

Scale: 0-10, 0=no disease.
*No statistical difference.

Plant It Straight, Or Mix It Up

EarlyBoss is safe for all livestock and can be planted straight or with other grasses and legumes for grazing, hay and silage, and wildlife. Blend **EarlyBoss** with other earlier crops to focus on early season production, or combine it with later maturing varieties to provide season-long quality forage.



Learn More

Get planting instructions, find a dealer, learn more at EarlyBossRyegrass.com and SmithSeed.com

